






# PhD Program in Pharmaceutical Sciences

A.D. 1308  
**unipg**  
DIPARTIMENTO  
DI SCIENZE FARMACEUTICHE

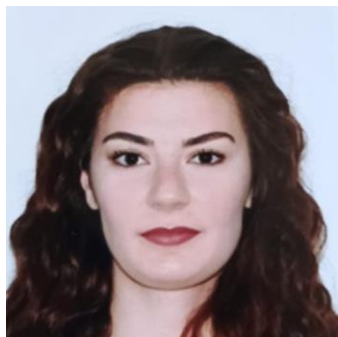
PhD students enrolled in the XXXVIII cycle  
A.A. 2022-2023

## CURRICULUM: EARLY PHASE DRUG DISCOVERY

PhD Student	Name	Supervisor/s
	<b>VERONICA CECCUCCI#</b>	Prof. Claudio Santi (UNIPG) Prof. Ornelio Rosati (UNIPG)
	<b>ERIKA PRIMAVERA*<sup>a</sup></b>	Prof.ssa Maria Letizia Barreca (UNIPG) Dr. Andrea Astolfi (UNIPG)
	<b>CHIARA SARNARI</b>	Prof.ssa Oriana Tabarrini (UNIPG) Prof. Giuseppe Manfroni (UNIPG)



DIPARTIMENTO 2018  
di ECCELLENZA 2022  
progetto DELPHI



**FATIMA  
NIGRO**



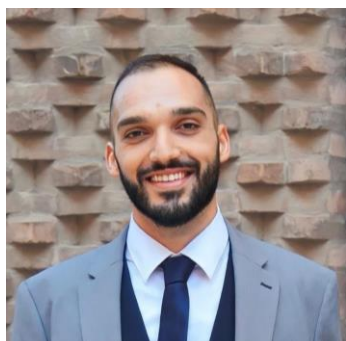
Prof.ssa Maura Marinozzi (UNIPG)



**FEDERICO  
PACCOIA<sup>#</sup>**

Prof. Antimo Gioiello (UNIPG)

**CURRICULUM: PHARMACEUTICAL TECHNOLOGY  
AND NUTRACEUTICALS**

<b>PhD Student</b>	<b>Name</b>	<b>Supervisor/s</b>
	<b>FEDERICO FIORANI</b>	Prof.ssa Elisabetta Albi (UNIPG) Prof. Cataldo Arcuri (UNIPG)
	<b>TOMMASO RONDINI</b>	Prof. Massimo Moretti (UNIPG) Prof.ssa Milena Villarini (UNIPG)
	<b>GHAID W ABUALZULOF<sup>§</sup></b>	Prof. Roccaldo Sardella (UNIPG) Prof.ssa Federica Ianni (UNIPG)



**LORENZO  
MANCINI<sup>§</sup>**

Prof. Stefano Giovagnoli (UNIPG)  
Prof.ssa Aurelie Schoubben (UNIPG)



**PAULINA  
WOJTYLO<sup>\*,b</sup>**

Prof. Stefano Giovagnoli (UNIPG)  
Prof. Emidio Camaioni (UNIPG)



**GABRIELE  
BONETTI<sup>‡</sup>**

Prof.ssa Elisabetta Albi (UNIPG)  
Prof. Tommaso Beccari (UNIPG)  
Dr. Matteo Bertelli (MAGI's LAB)

**ALESSIO  
MANGIATORDI<sup>¥</sup>**

Prof.ssa Luana Perioli (UNIPG)  
Dr.ssa Anna Tolomeo (ITEL)

---

*#PhD grant financed on the project «Dipartimenti di eccellenza 2018-2022»*

*§PhD grant financed by PNRR D.M. 351/2022*

*\*PhD grant financed by PNRR D.M. 352/2022*

*‡PhD grant supported by Intercept Pharmaceuticals*

*¥Industrial PhD*

*<sup>a</sup>Co-funded by Sybilla Biotech*

*<sup>b</sup>Co-funded by Adienne Pharma & Biotech*